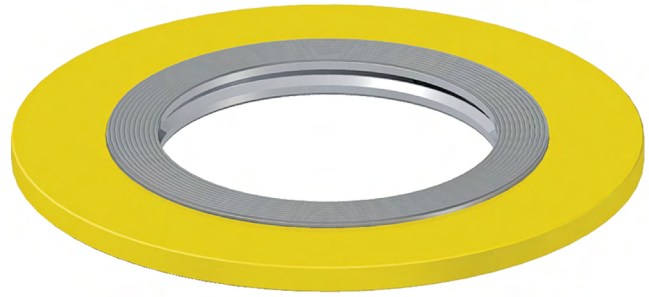


Spiral Wound Gaskets

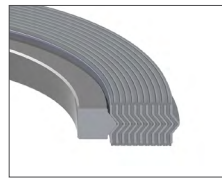
| Winding Materials | | Temp. Range | |
|----------------------|--------|-------------|-------|
| Stainless Steel 304 | -200°C | to | 420°C |
| Stainless Steel 316L | -200°C | to | 460°C |
| Filler Materials | | | |
| Graphite | Up | to | 523°C |
| PTFE | Up | to | 260°C |
| Centering Ring | | | |
| Carbon Steel | Up | to | 538°C |
| Inner Ring Materials | | | |
| Stainless Steel 304 | -200°C | to | 420°C |
| Stainless Steel 316 | -200°C | to | 460°C |



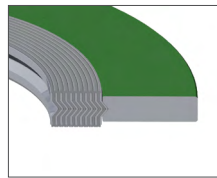
* Stainless steel 316 and 304 can exceed their continuous operating temperatures, up to 760°C, for short-term intervals. However, this may result in intergranular corrosion.



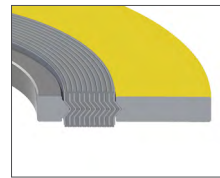
Winding



Winding
w/ Inner Ring



Winding
w/ Centering Ring

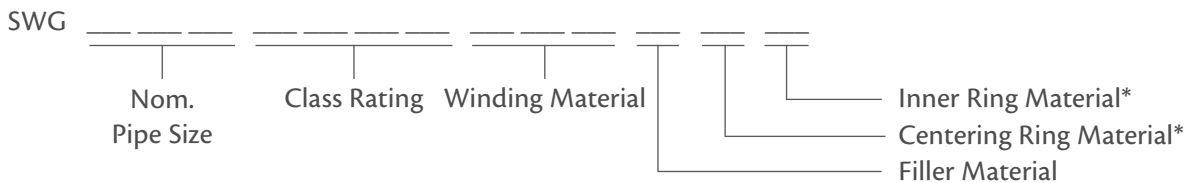


Winding w/ Inner
& Centering Ring

Product Description

We supply precision-engineered spiral wound gaskets that are approved by many oil and gas companies. They are designed as per ASME B16.20 to suit flange standards ASME B16.5 and are available for classes 150 to 2500. Our spiral wound gaskets are made with a superior-grade graphite filler that is in accordance with Industry specifications, Custom filler, winding strip, guide rings, and inner ring materials are available upon request.

Part Numbers:



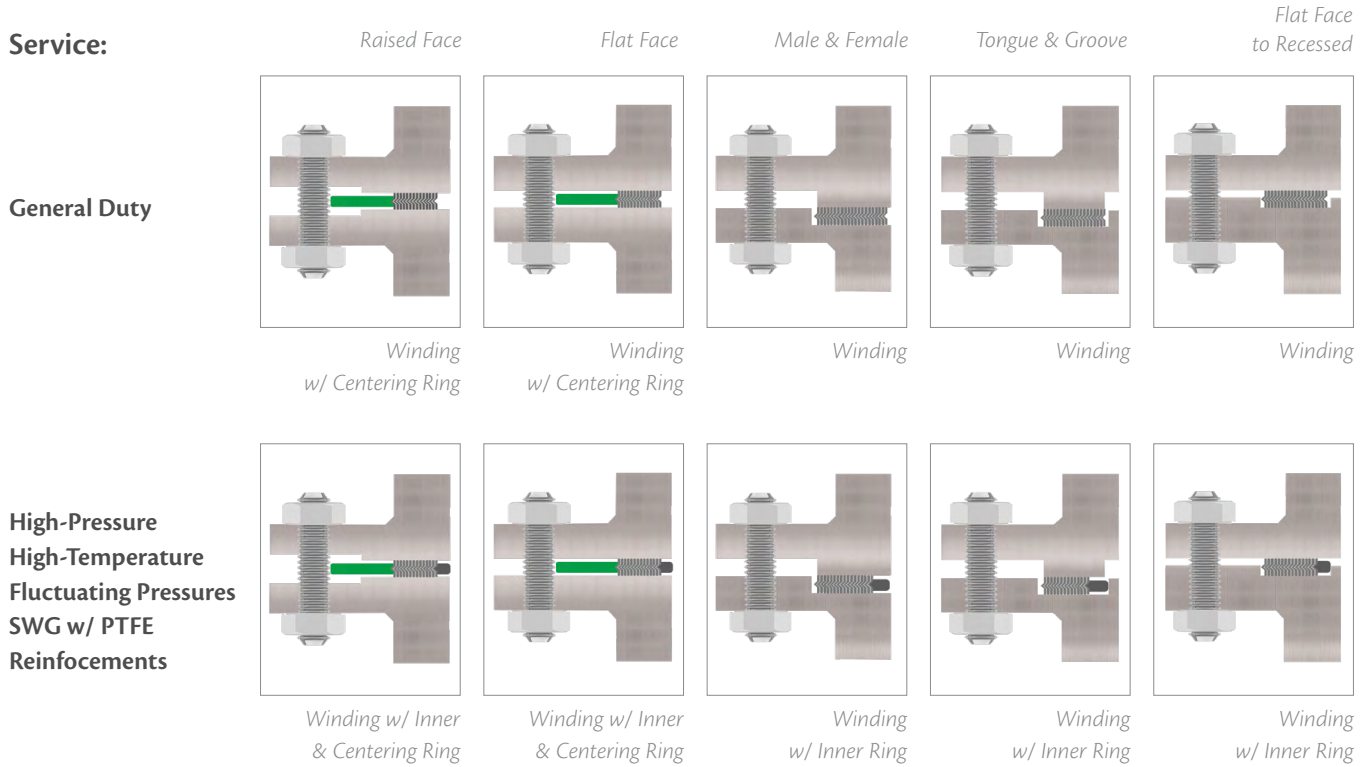
Example: SWG 26 150 316 G C I – Spiral Wound Gasket, 26" Nom. Pipe, 150#, Stainless Steel 316 Winding Material, Graphite Filler, Carbon Steel Centering Ring, Stainless Steel 316 Inner Ring

* If there is no internal ring, or centering ring then the respective materials will not be listed.

Spiral Wound Gaskets

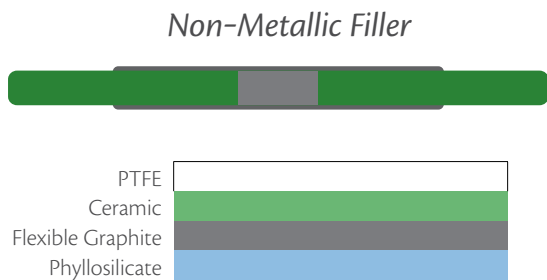
Selecting A Spiral Wound Gasket

Applications

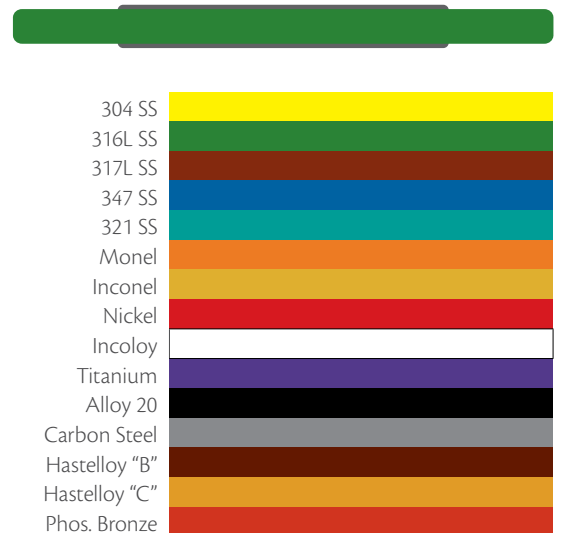


Colour Coding

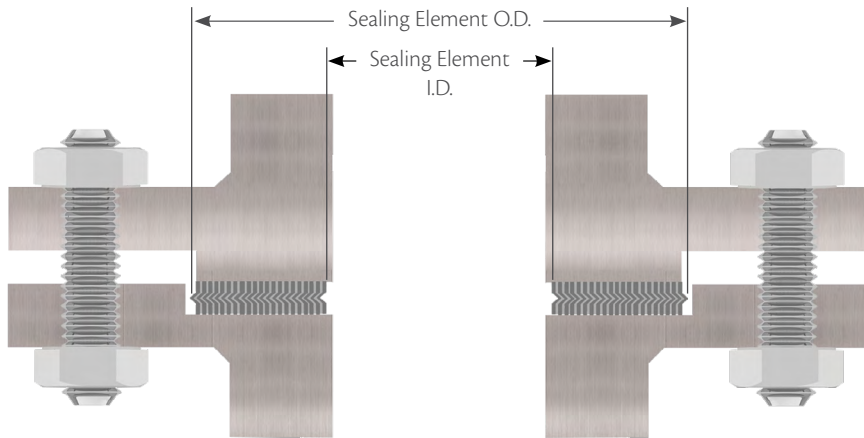
Centering rings are painted in accordance with ASME B16.20. The solid colour on the centering ring indicates the metallic winding material. The striped colour indicates the non-metallic reinforcements used between the metal windings.



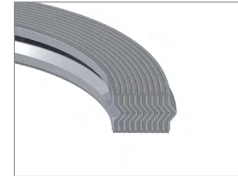
Winding Material



Spiral Wound Gaskets



Winding Pipes Under 24"



ASME B16.5 & BS 1560 Flanges

| Nominal Pipe Size | Male and Female | | | | Large Tongue Groove | | Small Tongue and Groove | |
|-------------------|--------------------------|---------|----------------------------|---------|--------------------------------|---------|--------------------------|---------|
| | Sealing Element 150-1500 | | Sealing Element Class 2500 | | Sealing Element Class 150-2500 | | Sealing Element 150-2500 | |
| | I.D. | O.D. | I.D. | O.D. | I.D. | O.D. | I.D. | O.D. |
| 1/4 | 1/2 | 1 | - | - | 1/2 | 1 | - | - |
| 1/2 | 1 | 1 3/8 | 13/16 | 1 3/8 | 1 | 1 3/8 | 1 | 1 3/8 |
| 3/4 | 1 5/16 | 1 11/16 | 1 1/16 | 1 11/16 | 1 5/16 | 1 11/16 | 1 5/16 | 1 11/16 |
| 1 | 1 1/2 | 2 | 1 1/4 | 2 | 1 1/2 | 2 | 1 1/2 | 1 7/8 |
| 1 1/4 | 1 7/8 | 2 1/2 | 1 5/8 | 2 1/2 | 1 7/8 | 2 1/2 | 1 7/8 | 2 1/4 |
| 1 1/2 | 2 1/8 | 2 7/8 | 1 7/8 | 2 7/8 | 2 1/8 | 2 7/8 | 2 1/8 | 2 1/2 |
| 2 | 2 7/8 | 3 5/8 | 2 3/8 | 3 5/8 | 2 7/8 | 3 5/8 | 2 7/8 | 3 1/4 |
| 2 1/2 | 3 3/8 | 4 1/8 | 3 | 4 1/8 | 3 3/8 | 4 1/8 | 3 3/8 | 3 3/4 |
| 3 | 4 1/4 | 5 | 3 3/4 | 5 | 4 1/8 | 5 | 4 1/4 | 4 5/8 |
| 3 1/2 | 4 3/4 | 5 1/2 | - | - | 4 3/4 | 5 1/2 | 4 3/4 | 5 1/8 |
| 4 | 5 3/16 | 6 3/16 | 4 3/4 | 6 3/16 | 5 3/16 | 6 3/16 | 5 3/16 | 5 11/16 |
| 4 1/2 | 5 11/16 | 6 3/4 | - | - | 5 11/16 | 6 3/4 | - | - |
| 5 | 6 5/16 | 7 5/16 | 5 3/4 | 7 5/16 | 6 5/16 | 7 5/16 | 6 5/16 | 6 13/16 |
| 6 | 7 1/2 | 8 1/2 | 6 3/4 | 8 1/2 | 7 1/2 | 8 1/2 | 7 1/2 | 8 |
| 8 | 9 3/8 | 10 5/8 | 8 3/4 | 10 5/8 | 9 3/8 | 10 5/8 | 9 3/8 | 10 |
| 10 | 11 1/4 | 12 3/4 | 10 3/4 | 12 3/4 | 11 1/4 | 12 3/4 | 11 1/4 | 12 |
| 12 | 13 1/2 | 15 | 13 | 15 | 13 1/2 | 15 | 13 1/2 | 14 1/4 |
| 14 | 14 3/4 | 16 1/4 | - | - | 14 3/4 | 16 1/4 | 14 3/4 | 15 1/2 |
| 16 | 17 | 18 1/2 | - | - | 17 | 18 1/2 | 16 3/4 | 17 5/8 |
| 18 | 19 1/4 | 21 | - | - | 19 1/4 | 21 | 19 1/4 | 20 1/8 |
| 20 | 21 | 23 | - | - | 21 | 23 | 21 | 22 |
| 24 | 25 1/4 | 27 1/4 | - | - | 25 1/4 | 27 1/4 | 25 1/4 | 26 1/4 |

Large Tongue and Groove Flanges:

- 1/2" sizes in class 150, 300, 400, 600, 900, 1500 and 2500 are interchangeable.

Male & Female and Large Tongue & Groove Flanges:

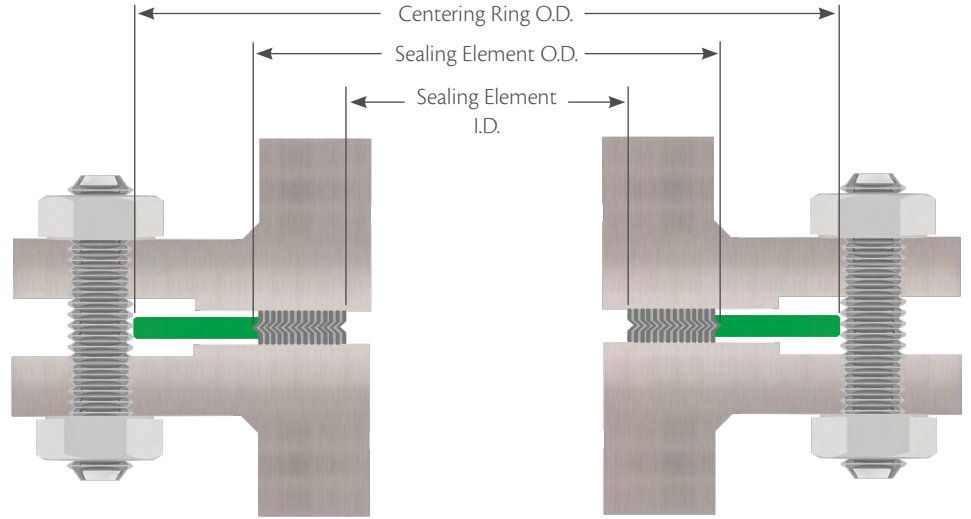
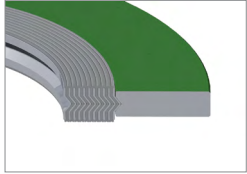
- Class 300, 400, 600 are interchangeable within their size category.
- Class 900 and 1500 are interchangeable within their size category.
- 1/4" sizes in class 150 are interchangeable.

Small Tongue and Groove Flanges:

- Classes 300 through 2500 are interchangeable within their specific size category.
- 3/4" sizes are interchangeable with large male & female and large tongue and groove gaskets within their specific pressure rating.
- 1/2" sizes are interchangeable within large male & female and large tongue and groove gaskets within their specific pressure rating.

Spiral Wound Gaskets

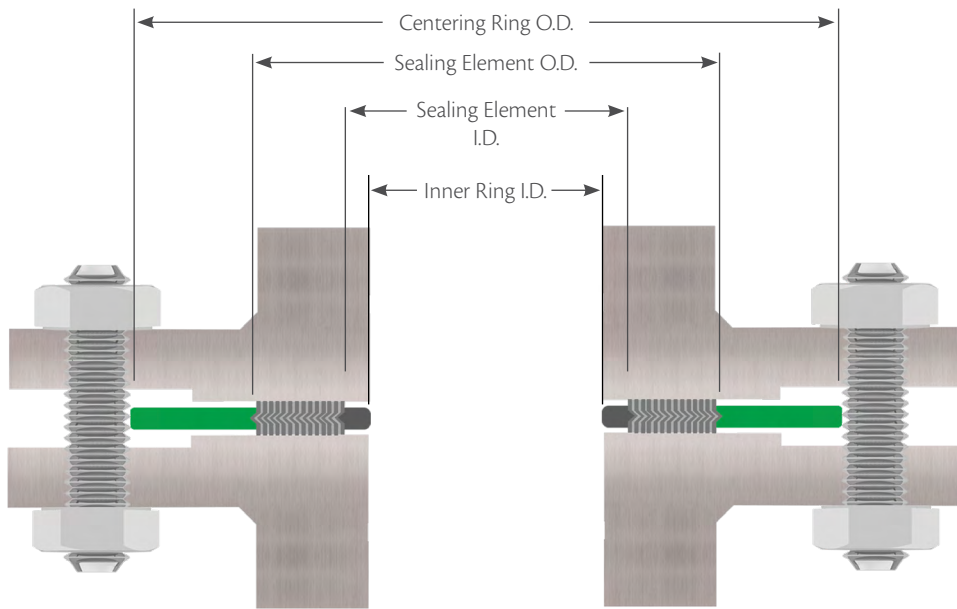
Winding With Centering Ring Pipes Under 24"



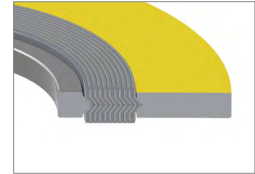
ASME B16.20 for ASME B16.5 Flanges

| Nom. Pipe Size | I.D of Sealing Element | | | | | | | O.D. of Sealing Element | | O.D. of Centering Ring | | | | | | |
|----------------|------------------------|----------|----------|----------|---------|--------|--------|-------------------------|------------------|------------------------|--------|--------|--------|--------|--------|--------|
| | 150 | 300 | 400 | 600 | 900 | 1500 | 2500 | 150,300 400,600 | 900,1500 2500 | 150 | 300 | 400 | 600 | 900 | 1500 | 2500 |
| 1/4 | 1/2 | 1/2 | 1/2 | 1/2 | - | - | - | 7/8 | - | 1 3/4 | 1 3/4 | 1 3/4 | 1 3/4 | - | - | - |
| 1/2 | 3/4 | 3/4 | 3/4 | 3/4 | 3/4 | 3/4 | 3/4 | 1 1/4 | 1 1/4 | 1 7/8 | 2 1/8 | 2 1/8 | 2 1/8 | 2 1/2 | 2 1/2 | 2 3/4 |
| 3/4 | 1 | 1 | 1 | 1 | 1 | 1 | 1 | 1 9/16 | 1 9/16 | 2 1/4 | 2 5/8 | 2 5/8 | 2 5/8 | 2 3/4 | 2 3/4 | 3 |
| 1 | 1 1/4 | 1 1/4 | 1 1/4 | 1 1/4 | 1 1/4 | 1 1/4 | 1 1/4 | 1 7/8 | 1 7/8 | 2 5/8 | 2 7/8 | 2 7/8 | 2 7/8 | 3 1/8 | 3 1/8 | 3 3/8 |
| 1 1/4 | 1 7/8 | 1 7/8 | 1 7/8 | 1 7/8 | 1 9/16 | 1 9/16 | 1 9/16 | 2 3/8 | 2 3/8 | 3 | 3 1/4 | 3 1/4 | 3 1/4 | 3 1/2 | 3 1/2 | 4 1/8 |
| 1 1/2 | 2 1/8 | 2 1/8 | 2 1/8 | 2 1/8 | 1 7/8 | 1 7/8 | 1 7/8 | 2 3/4 | 2 3/4 | 3 3/8 | 3 3/4 | 3 3/4 | 3 3/4 | 3 7/8 | 3 7/8 | 4 5/8 |
| 2 | 2 3/4 | 2 3/4 | 2 3/4 | 2 3/4 | 2 5/16 | 2 5/16 | 2 5/16 | 3 3/8 | 3 3/8 | 4 1/8 | 4 3/8 | 4 3/8 | 4 3/8 | 5 5/8 | 5 5/8 | 5 3/4 |
| 2 1/2 | 3 1/4 | 3 1/4 | 3 1/4 | 3 1/4 | 2 3/4 | 2 3/4 | 2 3/4 | 3 7/8 | 3 7/8 | 4 7/8 | 5 1/8 | 5 1/8 | 5 1/8 | 6 1/2 | 6 1/2 | 6 5/8 |
| 3 | 4 | 4 | 4 | 4 | 3 3/4 | 3 5/8 | 3 5/8 | 4 3/4 | 4 3/4 | 5 3/8 | 5 7/8 | 5 7/8 | 5 7/8 | 6 5/8 | 6 7/8 | 7 3/4 |
| 3 1/2 | 4 1/2 | 4 1/2 | 4 1/8 | 4 1/8 | 4 1/8 | 4 1/8 | - | 5 1/4 | 5 1/4 | 6 3/8 | 6 1/2 | 6 3/8 | 6 3/8 | 7 1/2 | 7 3/8 | - |
| 4 | 5 | 5 | 4 3/4 | 4 3/4 | 4 3/4 | 4 5/8 | 4 5/8 | 5 7/8 | 5 7/8 | 6 7/8 | 7 1/8 | 7 | 7 5/8 | 8 1/8 | 8 1/4 | 9 1/4 |
| 4 1/2 | 5 1/2 | 5 1/2 | 5 5/16 | 5 5/16 | 5 5/16 | 5 5/16 | - | 6 1/2 | 6 1/2 | 7 | 7 3/4 | 7 5/8 | 8 1/4 | 9 3/8 | 9 1/8 | - |
| 5 | 6 1/8 | 6 1/8 | 5 13/16 | 5 13/16 | 5 13/16 | 5 5/8 | 5 5/8 | 7 | 7 | 7 3/4 | 8 1/2 | 8 3/8 | 9 1/2 | 9 3/4 | 10 | 11 |
| 6 | 7 3/16 | 7 3/16 | 6 7/8 | 6 7/8 | 6 7/8 | 6 3/4 | 6 3/4 | 8 1/4 | 8 1/4 | 8 3/4 | 9 7/8 | 9 3/4 | 10 1/2 | 11 3/8 | 11 1/8 | 12 1/2 |
| 8 | 9 3/16 | 9 3/16 | 8 7/8 | 8 7/8 | 8 3/4 | 8 1/2 | 8 1/2 | 10 3/8 | 10 1/8 | 11 | 12 1/8 | 12 | 12 5/8 | 14 1/8 | 13 7/8 | 15 1/4 |
| 10 | 11 5/16 | 11 5/16 | 10 13/16 | 10 13/16 | 10 7/8 | 10 1/2 | 10 5/8 | 12 1/2 | 12 1/4 | 13 3/8 | 14 1/4 | 14 1/8 | 15 3/4 | 17 1/8 | 17 1/8 | 18 3/4 |
| 12 | 13 3/8 | 13 3/8 | 12 7/8 | 12 7/8 | 12 3/4 | 12 3/4 | 12 1/2 | 14 3/4 | 14 1/2 | 16 1/8 | 16 5/8 | 16 1/2 | 18 | 19 5/8 | 20 1/2 | 21 5/8 |
| 14 | 14 5/8 | 14 5/8 | 14 1/4 | 14 1/4 | 14 | 14 1/4 | - | 16 | 15 3/4 | 17 3/4 | 19 1/8 | 19 | 19 3/8 | 20 1/2 | 22 3/4 | - |
| 16 | 16 5/8 | 16 5/8 | 16 1/4 | 16 1/4 | 16 1/4 | 16 | - | 18 1/4 | 18 | 20 1/4 | 21 1/4 | 21 1/8 | 22 1/4 | 22 5/8 | 25 1/4 | - |
| 18 | 18 11/16 | 18 11/16 | 18 1/2 | 18 1/2 | 18 1/4 | 18 1/4 | - | 20 3/4 | 20 1/2 | 21 5/8 | 23 1/2 | 23 3/8 | 24 1/8 | 25 1/8 | 27 3/4 | - |
| 20 | 20 11/16 | 20 11/16 | 20 1/2 | 20 1/2 | 20 1/2 | 20 1/4 | - | 22 3/4 | 22 1/2 | 23 7/8 | 25 3/4 | 25 1/2 | 26 7/8 | 27 1/2 | 29 3/4 | - |
| 24 | 24 3/4 | 24 3/4 | 24 3/4 | 24 3/4 | 24 3/4 | 24 1/4 | - | 27 | 26 3/4 | 28 1/4 | 30 1/2 | 30 1/4 | 31 1/8 | 33 | 35 1/2 | - |

Spiral Wound Gaskets



Inner Ring Dimensions Pipes Under 24"



Standard I.D. of Inner Rings

| Nom. Pipe Size | Pressure Class | | | | | | |
|----------------|----------------|-------|-------|-------|-------|-------|-------|
| | 150 | 300 | 400 | 600 | 900 | 1500 | 2500 |
| 1/2 | 0.56 | 0.56 | 0.56 | 0.56 | 0.56 | 0.56 | 0.56 |
| 3/4 | 0.81 | 0.81 | 0.81 | 0.81 | 0.81 | 0.81 | 0.81 |
| 1 | 1.06 | 1.06 | 1.06 | 1.06 | 1.06 | 1.06 | 1.06 |
| 1 1/4 | 1.50 | 1.50 | 1.50 | 1.50 | 1.31 | 1.31 | 1.31 |
| 1 1/2 | 1.75 | 1.75 | 1.75 | 1.75 | 1.63 | 1.63 | 1.63 |
| 2 | 2.19 | 2.19 | 2.19 | 2.19 | 2.06 | 2.06 | 2.06 |
| 2 1/2 | 2.62 | 2.62 | 2.62 | 2.62 | 2.50 | 2.50 | 2.50 |
| 3 | 3.19 | 3.19 | 3.19 | 3.19 | 3.10 | 3.10 | 3.10 |
| 4 | 4.19 | 4.19 | 4.04 | 4.04 | 4.04 | 3.85 | 3.85 |
| 5 | 5.19 | 5.19 | 5.05 | 5.05 | 5.05 | 4.90 | 4.90 |
| 6 | 6.19 | 6.19 | 6.10 | 6.10 | 6.10 | 5.80 | 5.80 |
| 8 | 8.50 | 8.50 | 8.10 | 8.10 | 7.75 | 7.75 | 7.75 |
| 10 | 10.56 | 10.56 | 10.05 | 10.05 | 9.69 | 9.69 | 9.69 |
| 12 | 12.50 | 12.50 | 12.10 | 12.10 | 11.50 | 11.50 | 11.50 |
| 14 | 13.75 | 13.75 | 13.50 | 13.50 | 12.63 | 12.63 | – |
| 16 | 15.75 | 15.75 | 15.35 | 15.35 | 14.75 | 14.50 | – |
| 18 | 17.69 | 17.69 | 17.25 | 17.25 | 16.75 | 16.75 | – |
| 20 | 19.69 | 19.69 | 19.25 | 19.25 | 19.00 | 18.75 | – |
| 24 | 23.75 | 23.75 | 23.25 | 23.25 | 23.25 | 22.75 | – |

Spiral Wound Gaskets

Series A Flanges 22" and Over

| Nom. Pipe Size | Class 150 | | | | Class 300 | | | | Class 400 | | | |
|----------------|-----------------|-----------------|--------|---------------------|-----------------|-----------------|--------|---------------------|-----------------|-----------------|--------|---------------------|
| | Inner Ring I.D. | Sealing Element | | Centering Ring O.D. | Inner Ring I.D. | Sealing Element | | Centering Ring O.D. | Inner Ring I.D. | Sealing Element | | Centering Ring O.D. |
| | I.D. | I.D. | O.D. | | I.D. | I.D. | O.D. | | I.D. | I.D. | O.D. | |
| 22 | – | 22 3/4 | 24 | 26 | – | 22 3/4 | 24 3/4 | 27 3/4 | – | 22 3/4 | 24 3/4 | 27 5/8 |
| 26 | 25 3/4 | 26 1/2 | 27 3/4 | 30 1/2 | 25 3/4 | 27 | 29 | 32 7/8 | 26 | 27 | 29 | 32 3/4 |
| 28 | 27 3/4 | 28 1/2 | 29 3/4 | 32 3/4 | 27 3/4 | 29 | 31 | 35 3/8 | 28 | 29 | 31 | 35 1/8 |
| 30 | 29 3/4 | 30 1/2 | 31 3/4 | 34 3/4 | 29 3/4 | 31 1/4 | 33 1/4 | 37 1/2 | 29 3/4 | 31 1/4 | 33 1/4 | 37 1/4 |
| 32 | 31 3/4 | 32 1/2 | 33 7/8 | 37 | 31 3/4 | 33 1/2 | 35 1/2 | 39 5/8 | 32 | 33 1/2 | 35 1/2 | 39 1/2 |
| 34 | 33 3/4 | 34 1/2 | 35 7/8 | 39 | 33 3/4 | 35 1/2 | 37 1/2 | 41 5/8 | 34 | 35 1/2 | 37 1/2 | 41 1/2 |
| 36 | 35 3/4 | 36 1/2 | 38 1/8 | 41 1/4 | 35 3/4 | 37 5/8 | 39 5/8 | 44 | 36 1/8 | 37 5/8 | 39 5/8 | 44 |
| 38 | 37 3/4 | 38 1/2 | 40 1/8 | 43 3/4 | 37 1/2 | 38 1/2 | 40 | 41 1/2 | 37 1/2 | 38 1/4 | 40 1/4 | 42 1/4 |
| 40 | 39 3/4 | 40 1/2 | 42 1/8 | 45 3/4 | 39 1/2 | 40 1/4 | 42 1/8 | 43 7/8 | 39 3/8 | 40 3/8 | 42 3/8 | 44 3/8 |
| 42 | 41 3/4 | 42 1/2 | 44 1/4 | 48 | 41 1/2 | 42 1/4 | 44 1/8 | 45 7/8 | 41 3/8 | 42 3/8 | 44 3/8 | 46 3/8 |
| 44 | 43 3/4 | 44 1/2 | 46 3/8 | 50 1/4 | 43 1/2 | 44 1/2 | 46 1/2 | 48 | 43 1/2 | 44 1/2 | 46 1/2 | 48 1/2 |
| 46 | 45 3/4 | 46 1/2 | 48 3/8 | 52 1/4 | 45 3/8 | 46 3/8 | 48 3/8 | 50 1/8 | 46 | 47 | 49 | 50 3/4 |
| 48 | 47 3/4 | 48 1/2 | 50 3/8 | 54 1/2 | 47 5/8 | 48 5/8 | 50 5/8 | 52 1/8 | 47 1/2 | 49 | 51 | 53 |
| 50 | 49 3/4 | 50 1/2 | 52 1/2 | 56 1/2 | 49 | 51 | 53 | 54 1/4 | 49 1/2 | 51 | 53 | 55 1/4 |
| 52 | 51 3/4 | 52 1/2 | 54 1/2 | 58 3/8 | 52 | 53 | 55 | 56 1/4 | 51 1/2 | 53 | 55 | 57 1/4 |
| 54 | 53 1/2 | 54 1/2 | 56 1/2 | 61 | 53 1/4 | 55 1/4 | 57 1/4 | 58 3/4 | 53 1/4 | 55 1/4 | 57 1/4 | 59 3/4 |
| 56 | 55 1/2 | 56 1/2 | 58 1/2 | 63 1/4 | 55 1/4 | 57 1/4 | 59 1/4 | 60 3/4 | 55 1/4 | 57 1/4 | 59 1/4 | 61 3/4 |
| 58 | 57 1/2 | 58 1/2 | 60 1/2 | 65 1/2 | 57 | 59 1/2 | 61 1/2 | 62 3/4 | 57 1/4 | 59 1/4 | 61 1/4 | 63 3/4 |
| 60 | 59 1/2 | 60 1/2 | 62 1/2 | 67 1/2 | 60 | 61 1/2 | 63 1/2 | 64 3/4 | 59 3/4 | 61 3/4 | 63 3/4 | 66 1/4 |

| Nom. Pipe Size | Class 600 | | | | Class 900 | | | |
|----------------|-----------------|-----------------|--------|---------------------|-----------------|-----------------|--------|---------------------|
| | Inner Ring I.D. | Sealing Element | | Centering Ring O.D. | Inner Ring I.D. | Sealing Element | | Centering Ring O.D. |
| | I.D. | I.D. | O.D. | | I.D. | I.D. | O.D. | |
| 22 | – | 22 3/4 | 24 3/4 | 28 7/8 | – | – | – | – |
| 26 | 25 1/2 | 27 | 29 | 34 1/8 | 26 | 27 | 29 | 34 3/4 |
| 28 | 27 1/2 | 29 | 31 | 36 | 28 | 29 | 31 | 37 1/4 |
| 30 | 29 3/4 | 31 1/4 | 33 1/4 | 38 1/4 | 30 1/4 | 31 1/4 | 33 1/4 | 39 3/4 |
| 32 | 32 | 33 1/2 | 35 1/2 | 40 1/4 | 32 | 33 1/2 | 35 1/2 | 42 1/4 |
| 34 | 34 | 35 1/2 | 37 1/2 | 42 1/4 | 34 | 35 1/2 | 37 1/2 | 44 3/4 |
| 36 | 36 1/8 | 37 5/8 | 39 5/8 | 44 1/2 | 36 1/4 | 37 3/4 | 39 3/4 | 47 1/4 |
| 38 | 37 1/2 | 39 | 41 | 43 1/2 | 39 3/4 | 40 3/4 | 42 3/4 | 47 1/4 |
| 40 | 39 3/4 | 41 1/4 | 43 1/4 | 45 1/2 | 41 3/4 | 43 1/4 | 45 1/4 | 49 1/4 |
| 42 | 42 | 43 1/2 | 45 1/2 | 48 | 43 3/4 | 45 1/4 | 47 1/2 | 51 1/4 |
| 44 | 43 3/4 | 45 3/4 | 47 3/4 | 50 | 45 1/2 | 47 1/2 | 49 1/2 | 53 7/8 |
| 46 | 45 3/4 | 47 3/4 | 49 3/4 | 52 1/4 | 48 | 50 | 52 | 56 1/2 |
| 48 | 48 | 50 | 52 | 54 3/4 | 50 | 52 | 54 | 58 1/2 |
| 50 | 50 | 52 | 54 | 57 | – | – | – | – |
| 52 | 52 | 54 | 56 | 59 | – | – | – | – |
| 54 | 54 1/4 | 56 1/4 | 58 1/4 | 61 1/4 | – | – | – | – |
| 56 | 56 1/4 | 58 1/4 | 60 1/4 | 63 1/2 | – | – | – | – |
| 58 | 58 | 60 1/2 | 62 1/2 | 65 1/2 | – | – | – | – |
| 60 | 60 1/4 | 62 3/4 | 64 3/4 | 68 1/4 | – | – | – | – |

Spiral Wound Gaskets

Series B Flanges 26" and Over

| Nom. Pipe Size | Class 75 | | | Class 150 | | | | Class 300 | | | |
|----------------|----------------------|----------------------|---------------------|-----------------|----------------------|----------------------|---------------------|-----------------|----------------------|----------------------|---------------------|
| | Sealing Element I.D. | Sealing Element O.D. | Centering Ring O.D. | Inner Ring I.D. | Sealing Element I.D. | Sealing Element O.D. | Centering Ring O.D. | Inner Ring I.D. | Sealing Element I.D. | Sealing Element O.D. | Centering Ring O.D. |
| 26 | 26 1/4 | 27 | 27 7/8 | 25 3/4 | 26 1/2 | 27 1/2 | 28 9/16 | 25 3/4 | 26 1/2 | 28 | 30 3/8 |
| 28 | 28 1/4 | 29 1/8 | 29 7/8 | 27 3/4 | 28 1/2 | 29 1/2 | 30 9/16 | 27 3/4 | 28 1/2 | 30 | 32 1/2 |
| 30 | 30 1/4 | 31 1/8 | 31 7/8 | 29 3/4 | 30 1/2 | 31 1/2 | 32 9/16 | 29 3/4 | 30 1/2 | 32 | 34 7/8 |
| 32 | 32 1/4 | 33 1/8 | 33 7/8 | 31 3/4 | 32 1/2 | 33 1/2 | 34 11/16 | 31 3/4 | 32 1/2 | 34 | 37 |
| 34 | 34 1/4 | 35 1/8 | 35 7/8 | 33 3/4 | 34 1/2 | 35 3/4 | 36 13/16 | 33 3/4 | 34 1/2 | 36 | 39 1/8 |
| 36 | 36 1/4 | 37 1/4 | 38 5/16 | 35 3/4 | 36 1/2 | 37 3/4 | 38 7/8 | 35 3/4 | 36 1/2 | 38 | 41 1/4 |
| 38 | – | – | – | 37 3/4 | 38 3/8 | 39 3/4 | 41 1/8 | 38 1/4 | 39 3/4 | 41 1/4 | 43 1/4 |
| 40 | – | – | – | 39 3/4 | 40 1/4 | 41 7/8 | 43 1/8 | 40 1/4 | 41 3/4 | 43 1/4 | 45 1/4 |
| 42 | 42 1/4 | 43 1/4 | 44 5/16 | 41 3/4 | 42 1/2 | 43 7/8 | 45 1/8 | 42 3/4 | 43 3/4 | 45 1/4 | 47 1/4 |
| 44 | – | – | – | 43 3/4 | 44 1/4 | 45 7/8 | 47 1/8 | 44 1/4 | 45 3/4 | 47 1/4 | 49 1/4 |
| 46 | – | – | – | 45 3/4 | 46 1/2 | 48 3/16 | 49 7/16 | 46 3/8 | 47 7/8 | 49 3/8 | 51 7/8 |
| 48 | 48 3/8 | 49 1/2 | 50 1/2 | 47 3/4 | 48 1/2 | 50 | 51 7/16 | 48 1/2 | 49 3/4 | 51 5/8 | 53 7/8 |
| 50 | – | – | – | 49 3/4 | 50 1/2 | 52 3/16 | 53 7/16 | 49 7/8 | 51 7/8 | 53 3/8 | 55 7/8 |
| 52 | – | – | – | 51 3/4 | 52 1/2 | 54 3/16 | 55 7/16 | 51 7/8 | 53 7/8 | 55 3/8 | 57 7/8 |
| 54 | 54 3/8 | 55 5/8 | 56 5/8 | 53 3/4 | 54 1/2 | 56 | 57 5/8 | 53 3/4 | 55 1/4 | 57 1/4 | 60 1/4 |
| 56 | – | – | – | 56 | 56 7/8 | 58 3/16 | 59 5/8 | 56 1/4 | 58 1/4 | 60 | 62 3/4 |
| 58 | – | – | – | 58 3/16 | 59 1/16 | 60 3/16 | 62 3/16 | 58 7/16 | 60 7/16 | 61 15/16 | 65 3/16 |
| 60 | 60 1/2 | 61 3/4 | 62 7/8 | 60 7/16 | 61 5/16 | 62 7/16 | 64 3/16 | 61 5/16 | 62 9/16 | 64 3/16 | 67 3/16 |

| Nom. Pipe Size | Class 400 | | | | Class 600 | | | | Class 900 | | | |
|----------------|-----------------|----------------------|----------------------|---------------------|-----------------|----------------------|----------------------|---------------------|-----------------|----------------------|----------------------|---------------------|
| | Inner Ring I.D. | Sealing Element I.D. | Sealing Element O.D. | Centering Ring O.D. | Inner Ring I.D. | Sealing Element I.D. | Sealing Element O.D. | Centering Ring O.D. | Inner Ring I.D. | Sealing Element I.D. | Sealing Element O.D. | Centering Ring O.D. |
| 26 | 25 3/4 | 26 1/4 | 27 1/2 | 29 3/8 | 25 3/8 | 26 1/8 | 28 1/8 | 30 1/8 | 26 1/4 | 27 1/4 | 29 1/2 | 33 |
| 28 | 27 5/8 | 28 1/8 | 29 1/2 | 31 1/2 | 27 | 27 3/4 | 29 3/4 | 32 1/4 | 28 1/4 | 29 1/4 | 31 1/2 | 35 1/2 |
| 30 | 29 5/8 | 30 1/8 | 31 3/4 | 33 3/4 | 29 5/8 | 30 5/8 | 32 5/8 | 34 5/8 | 30 3/4 | 31 3/4 | 33 3/4 | 37 3/4 |
| 32 | 31 1/2 | 32 | 33 7/8 | 35 7/8 | 31 1/4 | 32 3/4 | 34 3/4 | 36 3/4 | 33 | 34 | 36 | 40 |
| 34 | 33 1/2 | 34 1/8 | 35 7/8 | 37 7/8 | 33 1/2 | 35 | 37 | 39 1/4 | 35 1/4 | 36 1/4 | 38 1/4 | 42 1/4 |
| 36 | 35 3/8 | 36 1/8 | 38 | 40 1/4 | 35 1/2 | 37 | 39 | 41 1/4 | 36 1/4 | 37 1/4 | 39 1/4 | 44 1/4 |
| 38 | 37 1/2 | 38 1/4 | 40 1/4 | 42 1/4 | 37 1/2 | 39 | 41 | 43 1/2 | 39 3/4 | 40 3/4 | 42 3/4 | 47 1/4 |
| 40 | 39 3/8 | 40 3/8 | 42 3/8 | 44 3/8 | 39 3/4 | 41 1/4 | 43 1/4 | 45 1/2 | 41 3/4 | 43 1/4 | 45 1/4 | 49 1/4 |
| 42 | 41 3/8 | 42 3/8 | 44 3/8 | 46 3/8 | 42 | 43 1/2 | 45 1/2 | 48 | 43 3/4 | 45 1/4 | 47 1/4 | 51 1/4 |
| 44 | 43 1/2 | 44 1/2 | 46 1/2 | 48 1/2 | 43 3/4 | 45 3/4 | 47 3/4 | 50 | 45 1/2 | 47 1/2 | 49 1/2 | 53 7/8 |
| 46 | 46 | 47 | 49 | 50 3/4 | 45 3/4 | 47 3/4 | 49 3/4 | 52 1/4 | 48 | 50 | 52 | 56 1/2 |
| 48 | 47 1/2 | 49 | 51 | 53 | 48 | 50 | 52 | 54 3/4 | 50 | 52 | 54 | 58 1/2 |
| 50 | 49 1/2 | 51 | 53 | 55 1/4 | 50 | 52 | 54 | 57 | – | – | – | – |
| 52 | 51 1/2 | 53 | 55 | 57 1/4 | 52 | 54 | 56 | 59 | – | – | – | – |
| 54 | 53 1/4 | 55 1/4 | 57 1/4 | 59 3/8 | 54 1/4 | 56 1/4 | 58 1/4 | 61 1/4 | – | – | – | – |
| 56 | 55 1/4 | 57 1/4 | 59 1/4 | 61 3/4 | 56 1/4 | 58 1/4 | 60 1/4 | 63 1/2 | – | – | – | – |
| 58 | 57 1/4 | 59 3/4 | 61 1/4 | 63 3/4 | 58 | 60 1/2 | 62 1/2 | 65 1/2 | – | – | – | – |
| 60 | 59 3/4 | 61 3/4 | 63 3/4 | 66 1/4 | 60 1/4 | 62 3/4 | 64 3/4 | 68 1/4 | – | – | – | – |